

READY SOLUTIONS

DISTRIBUTION BLOCKS **OLE-BOX ZB**

Dn20 up to **35 kW**
at $\Delta T=15^{\circ}\text{C}$

Dn25 up to **50 kW**
at $\Delta T=15^{\circ}\text{C}$



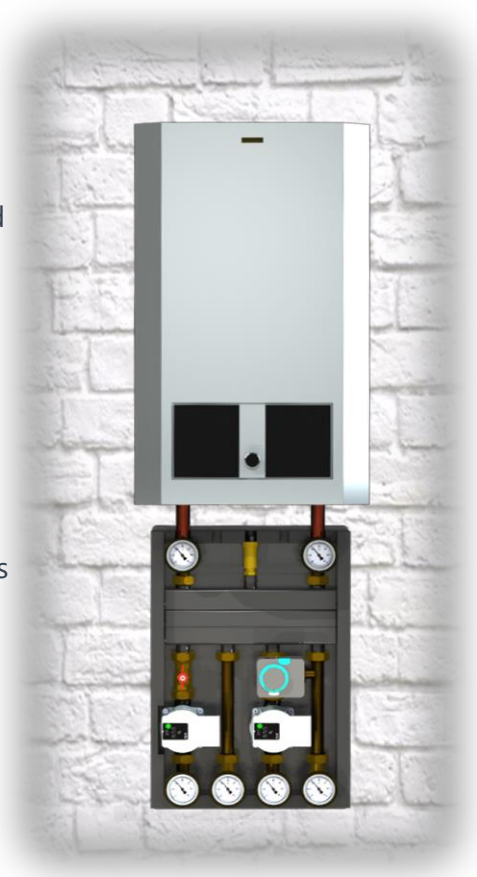
For 2 and 3 heating circuits

Supplied with a hydraulic manifold and without a hydraulic manifold

Housing made of EPP with a thickness of 26 mm

Can be placed next to and under the boiler

3 options for heating circuits 5 options for controlling mixing circuits



Compact dimensions

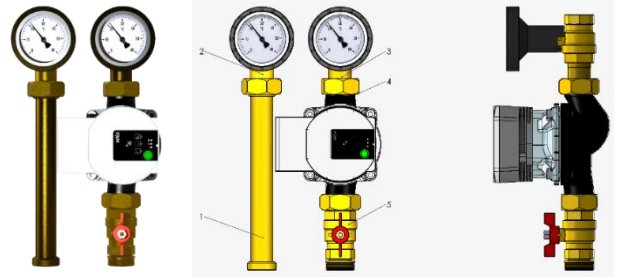
DIRECT CIRCUIT

Dn20

Maximum flow rates through circuit Dn20 – 2.0 m3/h

Dn25

Maximum flow rates through circuit Dn25 – 2.9 m3/h



Dn20 Technical specifications:

- Kv – **5.7**
- Connection to the system – 3/4" F
- Connection to the hydraulic block – 1" M
- Maximum operating pressure - 6 bar
- Maximum operating temperature - 105°C
- Center distance – 90mm

Dn20 Equipment:

1. Return line fitting
2. Valve with a union nut, built-in check valve, and thermometer
3. Valve with a union nut and thermometer
4. Pump (according to the circuit article)
5. Valve with a union nut

Dn25 Technical specifications:

- Kv – **7.7**
- Connection to the system – 1" F
- Connection to the hydraulic block – 1 1/2" M
- Maximum operating pressure - 6 bar
- Maximum operating temperature - 105°C
- Center distance – 92mm

Dn25 Equipment:

1. Return line fitting with a built-in check valve
2. Valve with a union nut x 3 pcs
3. Thermometer D=63mm
4. Connection fitting for thermometer
5. Pump (according to the circuit article)

MIXING CIRCUITS WITH THERMOSTATIC MIXING VALVE

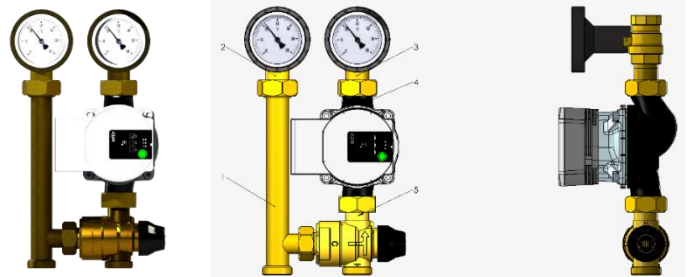
with temperature adjustment in the range of **20-45 °C** for underfloor heating and with temperature adjustment in the range of **35-60 °C** for radiator heating

Dn20

Maximum flow rates through circuit Dn20 – 1.0 m3/h

Dn25

Maximum flow rates through circuit Dn25 – 2.0 m3/h



Dn 20 Technical specifications:

- Kv – **2.0**
- Connection to the system – 3/4" F
- Connection to the hydraulic block – 1" M
- Maximum operating pressure - 6 bar
- Maximum operating temperature - 105°C
- Center distance – 90mm

Dn 20 Equipment:

1. Return line fitting
2. Valve with a union nut, built-in check valve, and thermometer
3. Valve with a union nut and thermometer
4. Pump (according to the circuit article)
5. Thermostatic mixing valve (according to the circuit article)

Dn25 Technical specifications:

- Kv – **3.5**
- Connection to the system – 1" F
- Connection to the hydraulic block – 1 1/2" M
- Maximum operating pressure - 6 bar
- Maximum operating temperature - 105°C
- Center distance – 92mm

Dn25 Equipment:

1. Return line fitting with a built-in check valve
2. Valve with a union nut x 3 pcs
3. Thermometer D=63mm
4. Connection fitting for thermometer
5. Pump (according to the circuit article)
6. Thermostatic mixing valve (according to the circuit article)

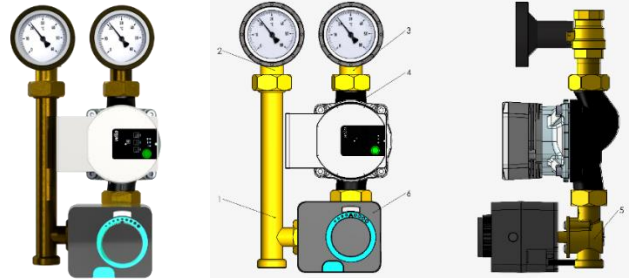
Mixing circuits with 3-way mixing valve and actuators

Dn20

Maximum flow rates through circuit Dn20 – 1.8 m³/h

Dn25

Maximum flow rates through circuit Dn25 – 2.5 m³/h



Dn20 Technical specifications:

- Kv – 5.0
- Connection to the system – 3/4" F
- Connection to the hydraulic block – 1" M
- Maximum operating pressure - 6 bar
- Maximum operating temperature - 105°C
- Center distance – 90mm

Dn 20 Equipment:

1. Return line fitting
2. Valve with a union nut, built-in check valve, and thermometer
3. Valve with a union nut and thermometer
4. Pump (according to the circuit article)
5. 3-way mixing valve
6. Actuator (according to the circuit article)

Dn25 Technical specifications:

- Kv – 5.9
- Connection to the system – 1" F
- Connection to the hydraulic block – 1 1/2" M
- Maximum operating pressure - 6 bar
- Maximum operating temperature - 105°C
- Center distance – 92mm

Dn25 Equipment:

7. Return line fitting with a built-in check valve
8. Valve with a union nut x 3 pcs
9. Thermometer D=63mm
10. Connection fitting for thermometer
11. Pump (according to the circuit article)
12. 3-way mixing valve
13. Actuator (according to the circuit article)

Actuator OST-05



Actuator for a 3-way mixing valve with 3-point control, 230V

Actuator OST-05-Y



Actuator for a 3-way valve with 0-10V control

Actuator -controller OST-07



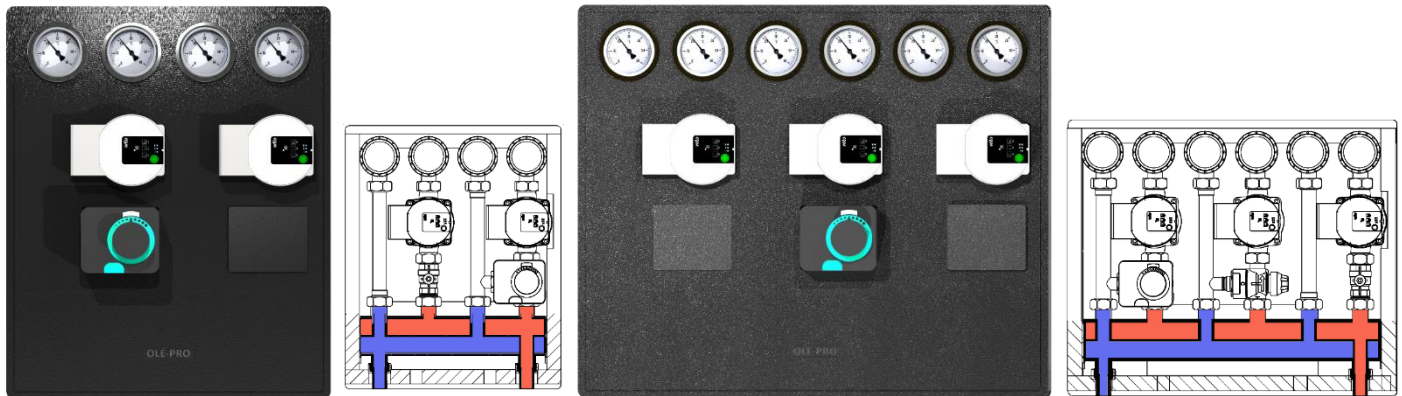
- ✓ 2 operating modes - heating and cooling
- ✓ 90° rotation time - 120s
- ✓ Color TFT display
- ✓ Convenient settings
- ✓ Quick access to all menu functions
- ✓ Adjustment range 0 - 90°C

Actuator -controller OST-20



- ✓ Weather-dependent control
- ✓ Operation in "Heating" and "Cooling" modes
- ✓ Pump control function
- ✓ Ability to set temperature changes according to the time of day for each day of the week
- ✓ 2 temperature sensors + outdoor temperature sensor included

Hydraulic block Dn20 and Dn25 for 2 and 3 heating circuits – **without** hydraulic separator



	OLE-BOX Dn20	OLE-BOX Dn25
ΔT	kW	
5°C	12	16
10°C	23	32
15°C	35	48
20°C	46	63

Dn20 Technical specifications:

- Maximum flow rate - 2.2 m³/hour
- Maximum flow rate per circuit - 2.0 m³/hour
- Maximum operating pressure - 6 bar
- Maximum operating temperature - 105°C
- Boiler connection: 3/4" M
- Circuit connections: 1" union nut

Dn20 Equipment:

- Distribution manifold with union nuts
 - Union nuts 1" x 3/4" (2 pcs.) for boiler connection
 - Thermal insulation casing with EPP 26 mm density 40 g/liter
 - Wall mounting kit included
- Heating circuits (pump groups) not included

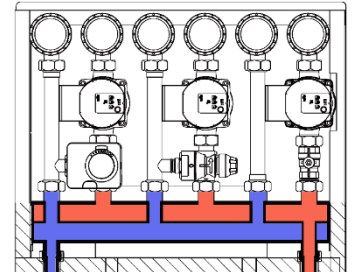
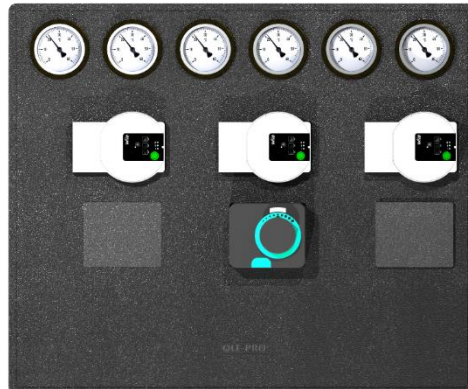
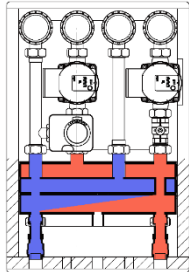
Dn25 Technical specifications:

- Maximum flow rate - 2.9 m³/hour
- Maximum flow rate per circuit - 2.9 m³/hour
- Maximum operating pressure - 6 bar
- Maximum operating temperature - 105°C
- Boiler connection: 1" M
- Circuit connections: 1" union nut

Dn25 Equipment:

- Distribution manifold with union nuts
 - Union nuts 1 1/2" x 1" (2 pcs.) for boiler connection
 - Thermal insulation casing with EPP 26 mm density 40 g/liter
 - Wall mounting kit included
- Heating circuits (pump groups) not included

Hydraulic block Dn20 and Dn25 heating circuits – **with** hydraulic separator



	OLE-BOX Dn20	OLE-BOX Dn25
ΔT	kW	
5°C	12	16
10°C	23	32
15°C	35	48
20°C	46	63

Dn20 Technical specifications:

- Maximum flow rate - 2.2 m3/hour
- Maximum flow rate per circuit - 2.0 m3/hour
- Maximum operating pressure - 6 bar
- Maximum operating temperature - 105°C
- Boiler connection: 3/4" F
- Circuit connections: 1" union nut

Dn20 Equipment:

- Distribution manifold with hydraulic separator, includes union nuts
- Ball valves with thermometers and union nuts 1" x 3/4" VR (2 pcs.) for boiler connection
- Thermal insulation casing with EPP 26 mm density 40 g/liter
- Wall mounting kit included
- Heating circuits – as per the model

Dn25 Technical specifications:

- Maximum flow rate - 2.9 m3/hour
- Maximum flow rate per circuit - 2.9 m3/hour
- Maximum operating pressure - 6 bar
- Maximum operating temperature - 105°C
- Boiler connection: 1" M
- Circuit connections: 1 1/2" union nut

Dn25 Equipment:

- Distribution manifold with hydraulic separator, includes union nuts
- Ball valves for boiler connection – 2 pcs
- Thermometers - 2 pcs
- Thermal insulation casing with EPP 26 mm density 40 g/liter
- Wall mounting kit included
- Heating circuits – as per the model