

Wilo-Star RS, RSD



- en** Installation and operating instructions
- fr** Notice de montage et de mise en service
- es** Instrucciones de instalación y funcionamiento
- ru** Инструкция по монтажу и эксплуатации
- kk** Монтаждау және пайдалану бойынша нұсқаулық
- sr** Uputstvo za ugradnju i upotrebu

Fig. 1:

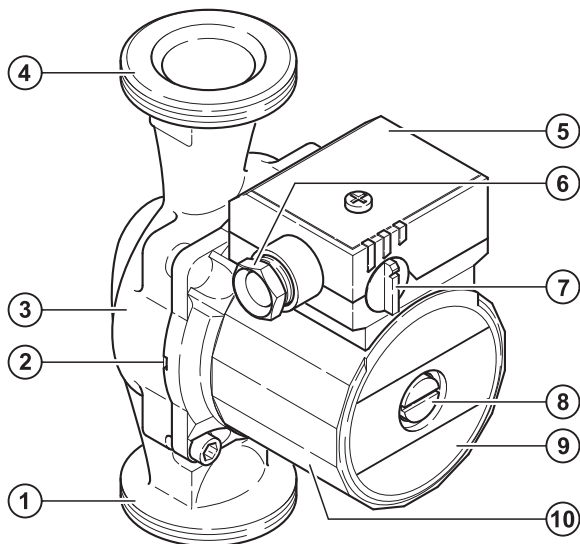


Fig. 2:

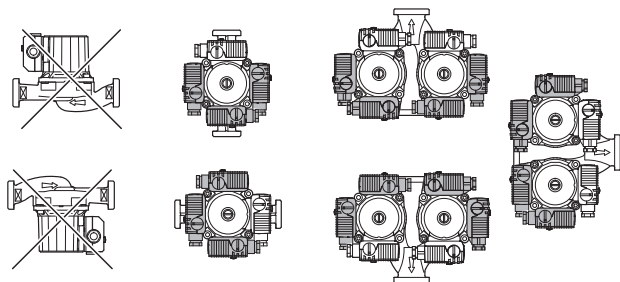


Fig. 3:

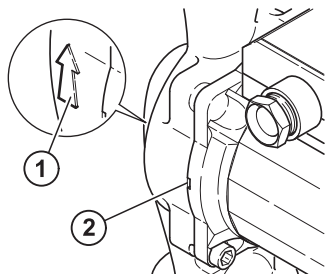


Fig. 4:

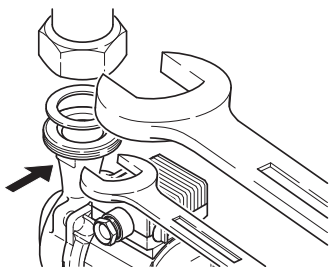
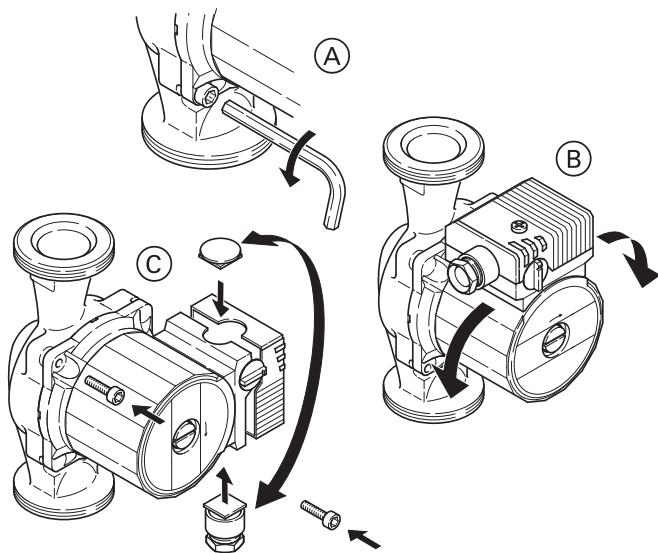


Fig. 5:



5 Product information

5.1 Type key

Example: Wilo-Star-RS 25/4

Star-RS	RS = heating circulation pump, glandless pump RSD = double heating circulation pump, glandless pump
25	Screwed connection 15, (Rp ½), 25 (Rp1), 30 (Rp1 ½)
/4	4 = maximum delivery head in m at Q = 0 m³/h

5.2 Technical data

Connection voltage	1 ~ 230 V ± 10 %
Mains frequency	50 Hz
Protection class IP	See rating plate
Max. motor speed	See rating plate
Water temperatures at max. ambient temperature of +40 °C	-10 °C to +110 °C
Max. ambient temperature	+40 °C
Max. operating pressure	10 bar (1000 kPa)
Minimum inlet pressure ¹⁾ at +50 °C/+95 °C/+110 °C	0.05 bar / 0.3 bar / 1.0 bar (5 kPa / 30 kPa / 100 kPa)
Port-to-port length	130 mm / 180 mm
Variable speed control ²⁾	3 stages

¹⁾ The values apply up to 300 m above sea level; Addition for higher altitudes: 0.01 bar/100 m increase in height. To prevent cavitation noises, be sure to maintain the minimum inlet pressure at the suction port of the pump.

²⁾ For Star-RSD double pumps, a switchgear is required in addition for time-dependent main/standby or parallel/peak-load operation.

5.3 Scope of delivery

- Complete circulation pump
- 2 flat gaskets
- Installation and operating instructions