

## Wilo-Star-Z NOVA



**en** Installation and operating instructions  
**fr** Notice de montage et de mise en service  
**nl** Inbouw- en bedieningsvoorschriften  
**es** Instrucciones de instalación y funcionamiento  
**it** Istruzioni di montaggio, uso e manutenzione  
**el** Οδηγίες εγκατάστασης και λειτουργίας  
**tr** Montaj ve kullanma kılavuzu  
**hu** Beépítési és üzemeltetési utasítás  
**pl** Instrukcja montażu i obsługi

**cs** Návod k montáži a obsluze  
**ru** Инструкция по монтажу и эксплуатации  
**uk** Інструкція з монтажу та експлуатації  
**lv** Uzstādīšanas un ekspluatācijas instrukcija  
**lt** Montavimo ir naudojimo instrukcija  
**sk** Návod na montáž a obsluhu  
**sv** Monterings- och skötselanvisning  
**fi** Asennus- ja käyttöohje  
**da** Monterings- og driftsvejledning

Fig. 1a:

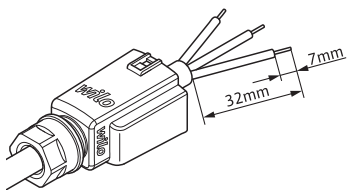


Fig. 1b:

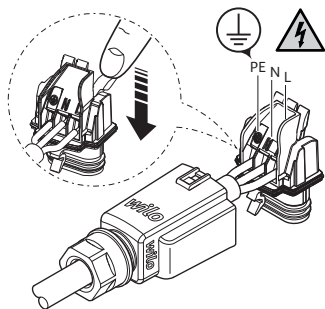


Fig. 1c:

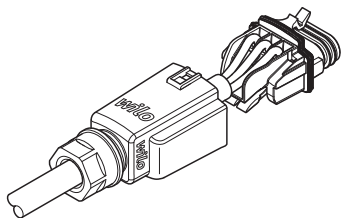


Fig. 1d:

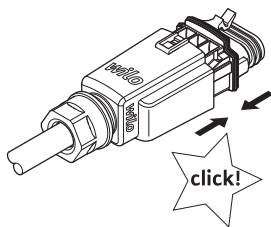


Fig. 1e:

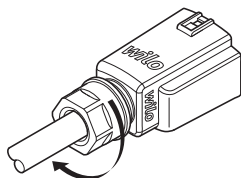
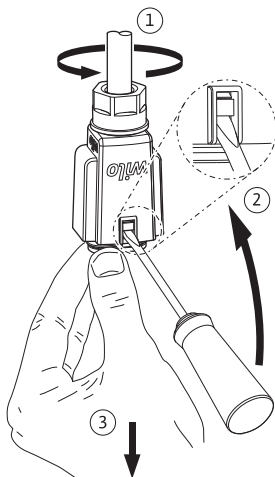


Fig. 2:

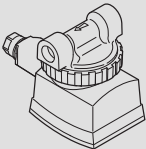
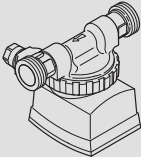


### 3 Technical data

#### 3.1 Type key

Star-Z	Series: Standard secondary hot water circulation pump, glandless pump
NOVA	Type designation A = with check valves

#### 3.2 Connections

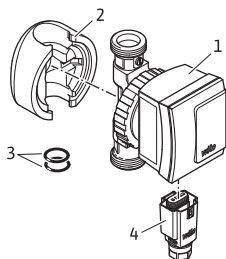
	<b>Star-Z NOVA</b> Screwed connection: 15 (Rp 1/2")
	<b>Star-Z NOVA A</b> Screwed connection: 15 (Rp 1/2") and check valves with G1 thread

## 3.3 Data

Star-Z NOVA, Star-Z NOVA A	
Mains voltage	1 ~ 230 V / 50 Hz
Protection class	42
Nominal diameter of connecting pipes	R ½
Installation length	84 mm (Type A: 138 mm)
Maximum permissible operating pressure	10 bar (1000 kPa)
Water temperature at max. ambient temperature of +40 °C	+2 °C to +95 °C

See name plate or Wilo catalogue for further information.

## 3.4 Scope of delivery



- 1 Pump
- 2 Thermal insulation shell
- 3 Sealing rings
- 4 Wilo-Connector
- 5 Installation and operating instructions (not shown)